

## Miles Road Colliers Wood Borders, CR4 3DA

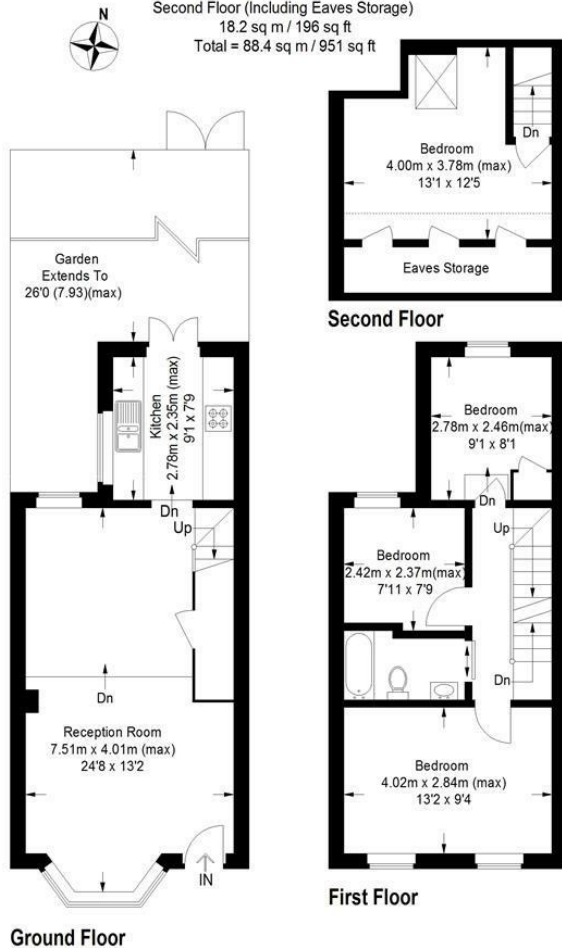
£485,000 Freehold



A beautifully presented and modern four bedroom, end of terrace family home, located on a quiet residential road close to Colliers Wood Tube Station, Tramlink services to both Wimbledon and Croydon and local amenities at the Tandem Centre, including supermarkets, retail stores, schools and gyms. Offered to the market with no onward chain, this property comprises of a good sized reception room, a modern fitted kitchen with access to the low maintenance private rear garden. Upstairs, you will find four bedrooms, three on the first floor and one in the loft, and a modern fitted bathroom suite. The property has the potential to be extended to the side and rear of the property (subject to the usual planning permissions) and would make the ideal family home. Viewings are strongly recommended to appreciate this properties full potential.

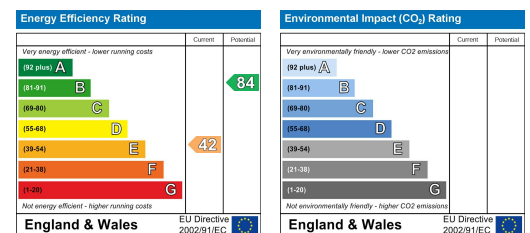
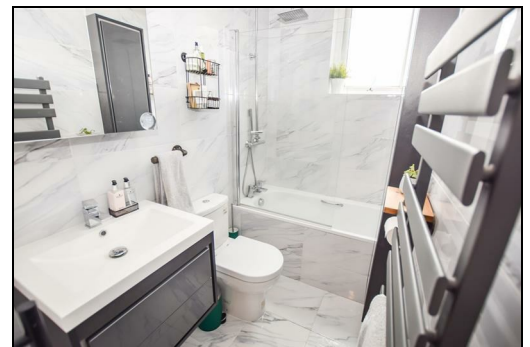
## Miles Road, CR4

Approximate Gross Internal Area  
 Ground Floor = 35.9 sq m / 386 sq ft  
 First Floor = 34.3 sq m / 369 sq ft  
 Second Floor (Including Eaves Storage)  
 18.2 sq m / 196 sq ft  
 Total = 88.4 sq m / 951 sq ft



This floor plan is for representation purposes only and is not drawn to scale. Whilst every attempt has been made to ensure its accuracy measurements are approximate only and should be checked before making any decisions reliant upon them. Copyright Bespokeplans.co.uk 2020 (ID716516)

- Four Bedrooms
- Potential To Extend (STPP)
- No Onward Chain
- Low Maintenance Garden
- Good Transport Links
- Ideal Family Home
- Gated Off Street Parking
- EPC Rating : E



For Free Mortgage Quote and Best Mortgage Rates, call an Ellisons Mortgage Advisor on 020 8544 0518



Although these particulars are believed to be correct, their accuracy is not guaranteed and they do not form part of any contract.

Celebrating 30 years of successful Sales and Lettings in Merton

